



INTEQ

Company : Nexus Energy

Well : Longtom-4 H

Interval : 2563.00 - 3888.75 meters

Created : 08/Aug/2008 5:40:20 AM

## FORMATION EVALUATION LOG

### Chromatograph Data

Methane ppm

10 | 100 | 1000 | 10000 | 100000

Ethane ppm

10 | 100 | 1000 | 10000 | 100000

Propane ppm

10 | 100 | 1000 | 10000 | 100000

iso-Butane ppm

10 | 100 | 1000 | 10000 | 100000

n-Butane ppm

10 | 100 | 1000 | 10000 | 100000

iso-Pentane ppm

10 | 100 | 1000 | 10000 | 100000

n-Pentane ppm

10 | 100 | 1000 | 10000 | 100000

Ditch Gas %

0.01 | 0.1 | 1 | 10 | 100

### LITHOLOGY DESCRIPTIONS

### Cuttings

INTERPRETED  
LITHOLOGY

### Analysis

DIRECT FLUOR

MD meters 1:500

2570

2580

2590

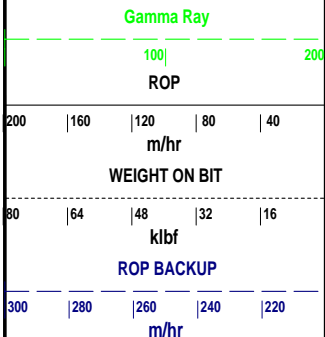
2600

2610

2620

2630

2640



WOB: 11-39 klbf  
RPM: 121-154  
GPM: 1034-1082  
SPP: 3625-3890 psi

24/07/2008

NB7: 241mm (9-1/2")  
Make: Smith  
Type: PDC/JY 2803  
Jets: 7x16  
Depth In: 2600.0 m  
Depth Out: 2841.0 m  
Drilled 241 m in 9.4hrs  
Grade: 2-4 -BT-A-X-I-RO-CP

CLYST: m-dk gy, occ bn gy, mod  
frm-frm, occ sft, occ hd, sbbiky-blky,  
occ lams, grd to Sltst

Drilled Longtom-4 P from 2600m  
- 2987m

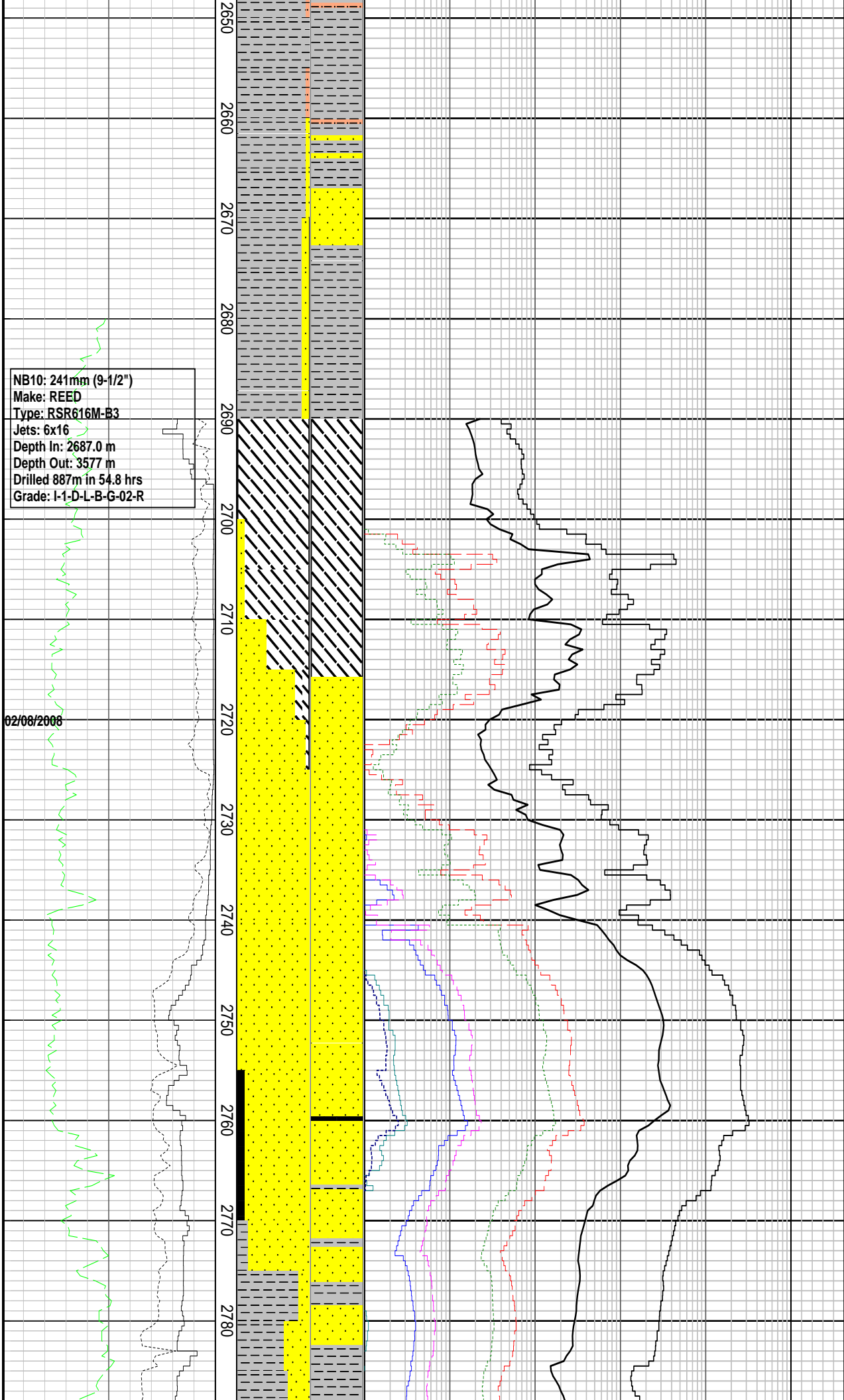
FIT @ 2604 m with 11.95ppg  
EMW: 14.0 ppg @ 818 psi

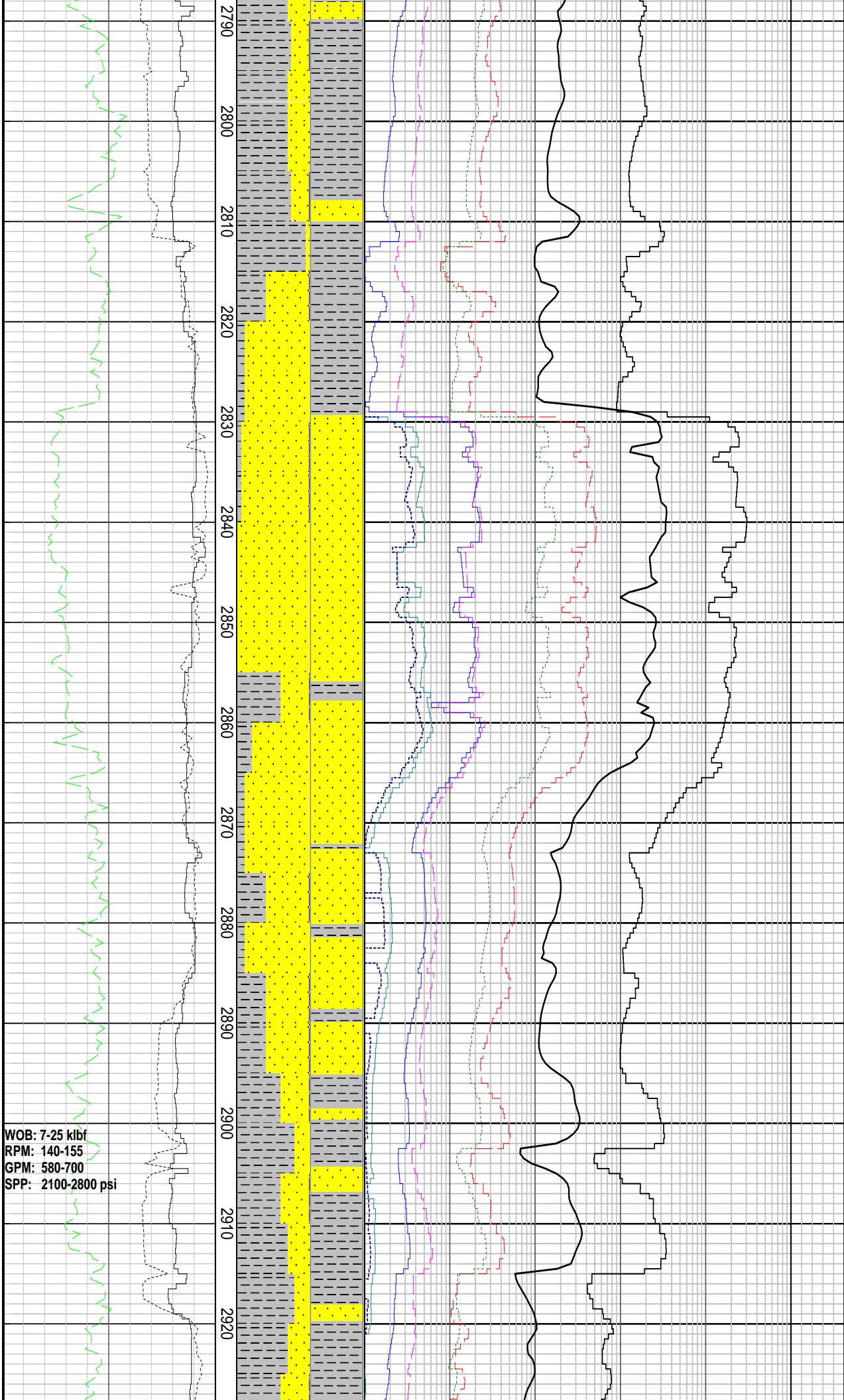
MW: 12.2 ppg FV: 125  
PV: 44 YP: 34  
Gels: 13/18/21  
O/W: 52.0/24.0

MD: 2621.5m Azi: 182.84°  
TVD: 2364m Incl: 53.72°

SST: pred lse qtz gr, trnsi-trnsp, off  
wh, v lt gy-lt gy i/p, fri, vf-f, occ m gr,  
sb ang-rndd, prly-mod srt, occ wl srt,  
arg mtrx, calc cmt, fr vis por, no shw

SLTST: v lt gy-lt gy, v sft-sft, occ frm,  
sbbiky-blky, grd to vf SST





mtrx, calc cmt, tr carb mat, tr glauc, p  
inf por, no shw

MD: 2792.00m Azi: 176.31°  
TVD: 2469.1m Incl: 53.1°

WOB: 5-25 klbf  
RPM: 120-160  
GPM: 655-700  
SPP: 2450-2800 psi  
CLYST: m dk gy, mod frm-frm,  
occ hd, sbbiky-blky, grd to Sltst

MD: 2820.01m Azi: 176.82°  
TVD: 2485.5m Incl: 54.07°

SST: lt gy, trnsI-trnsp, m-crs gr, occ v  
crs gr, grnsh gy, mod rdsh brn lse qtz  
gr, sbang-sbrnd, sbsph, mod srt, lt gy  
agg i/p, frm-fri, tr arg mtrx, abd blk  
plag i/p, pr vis por

MD: 2850.81m Azi: 179.97°  
TVD: 2503.4m Incl: 54.91°

CLYST: m dk gy, frm-hd, sbbiky-blky,  
grd to Sltst

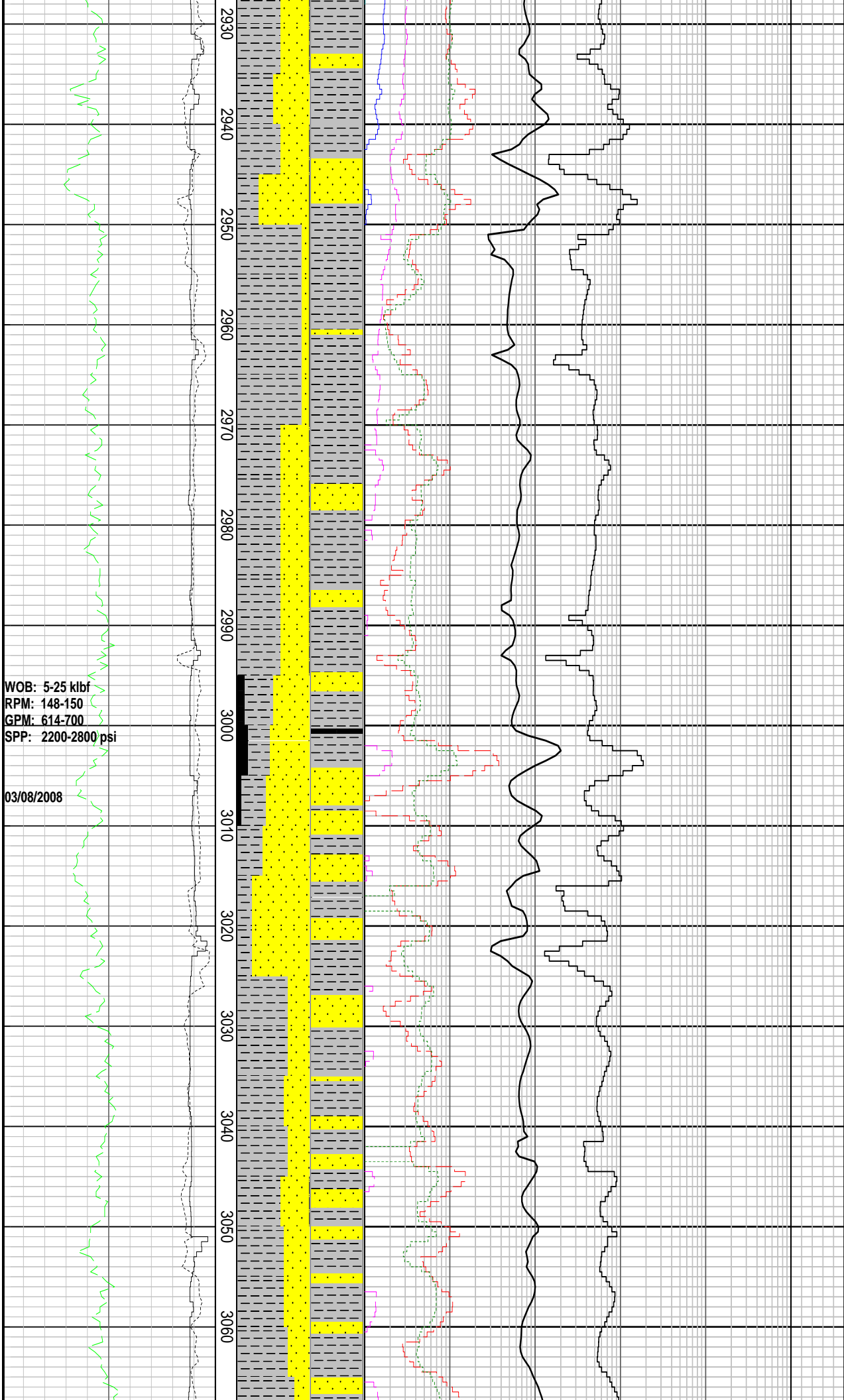
MW: 12.00 ppg FV: 96  
PV: 45 YP: 35  
Gels: 14/25/29  
O/W: 69.6/30.4

SST: lt gy, clr, vf-f, occ crs gr,  
sbang-sbrndd, sbsph, mod wl srt, tr  
arg mtrx i/p, pr vis por, no shw

MD: 2881.69m Azi: 185.74°  
TVD: 2520.7m Incl: 57.25°

CLYST: m gy-dk gy, frm-hd,  
sbbiky-sbfiss, slty, grd to Sltst

MD: 2911.49m Azi: 188.17°  
TVD: 2535.6m Incl: 62.80°



CLYST: m gy-dk gy, occ gysh blk, sft-frm, occ hd, sbblky, sbfiss, amor i/p

MD: 2941.41m Azi: 188.76°  
TVD: 2548.7m Incl: 65.11°

SST: lt gy, trnsf, f-crs gr, occ v crs gr, sbang-sbrndd, sbsph, mod srt, pr vis por, no shw

MW: 12.00 ppg FV: 92  
PV: 45 YP: 32  
Gels: 14/25/29  
O/W: 70/30

CLYST: lt gy- dk gy, frm-hd, sbblky-blky, occ sbfiss, amor

SST: dk-dk m gy, lt gy i/p, occ wh, trnsf- trnsp, occ opq, fri-mod hd, uncons i/p, vf-f gr, crs gr i/p, sbang-sbrndd, ang i/p, sbelong-sbsph, pr-mod srt, calc cmt, tr slt, tr glauc, pr inf por, no shw

CLYST: lt gy- dk gy, frm-hd, sft i/p, sbblky-blky, occ sbfiss, amor, n calc, grd to Sltst

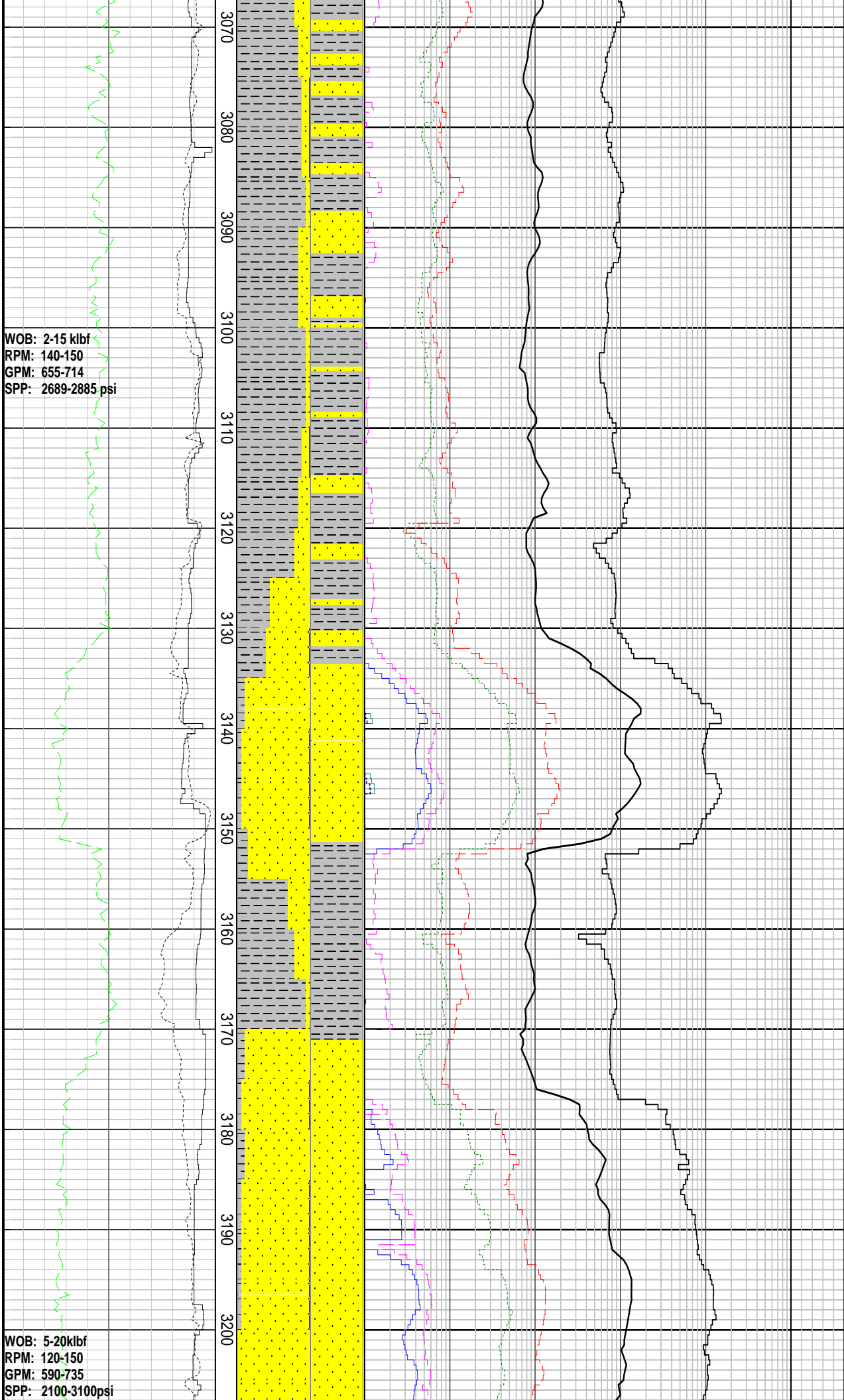
COAL: blk, frm, blky-sbblky, erthy-sbvit lus, brit

MD: 3016.23m Azi: 189.15°  
TVD: 2577.3m Incl: 69.92°

SST: dk-dk m gy, lt gy i/p, occ wh, trnsf- trnsp, occ opq, fri-mod hd, uncons i/p, vf-f gr, crs gr i/p, sbang-sbrndd, ang i/p, sbelong-sbsph, pr-mod srt, calc cmt, tr slt, tr carb mat, tr glauc, pr inf por, no shw

CLYST: lt gy- dk gy, frm-hd, sft i/p, sbblky-blky, occ sbfiss, amor, n calc, grd to Sltst

SST: dk-dk m gy, lt gy i/p, occ wh, trnsf- trnsp, occ opq, fri-mod hd, vf-f gr, crs gr i/p, sbang-sbrndd, ang i/p, sbsph, pr-mod srt, calc cmt, tr slt, tr carb mat, tr glauc, tr arg mtr



tr silt, tr carb mat, tr glauc, tr arg mtrx, tr micrlam, pr inf por, no shw

MD: 3076.35m Azi: 190.05°  
TVD: 2596.3m Incl: 72.83°

SST: dk-dk m gy, lt gy i/p, occ wh, trnsi-trnsp, occ opq, fri-mod hd, vf-f gr, crs gr i/p, sbang-sbrndd, ang i/p, sbsph, pr-mod srt, calc cmt, tr silt, tr carb mat, tr glauc, tr arg mtrx, tr micrlam, pr inf por, no shw

MD: 3106.22m Azi: 185.49°  
TVD: 2605.1m Incl: 72.92°

CLYST: lt gy- dk gy, frm-hd, sft i/p, sbbiky-blky, occ sbfiss, amor, n calc, grdg to Sltst

SST: dk-dk m gy, lt gy i/p, occ wh, trnsi-trnsp, occ opq, fri-mod hd, vf-f gr, crs gr i/p, sbang-sbrndd, ang i/p, sbsph, pr-mod srt, calc cmt, tr silt, tr carb mat, tr glauc, tr arg mtrx, tr micrlam, pr inf por, no shw

MD: 3136.04m Azi: 186.22°  
TVD: 2613.10m Incl: 75.98°

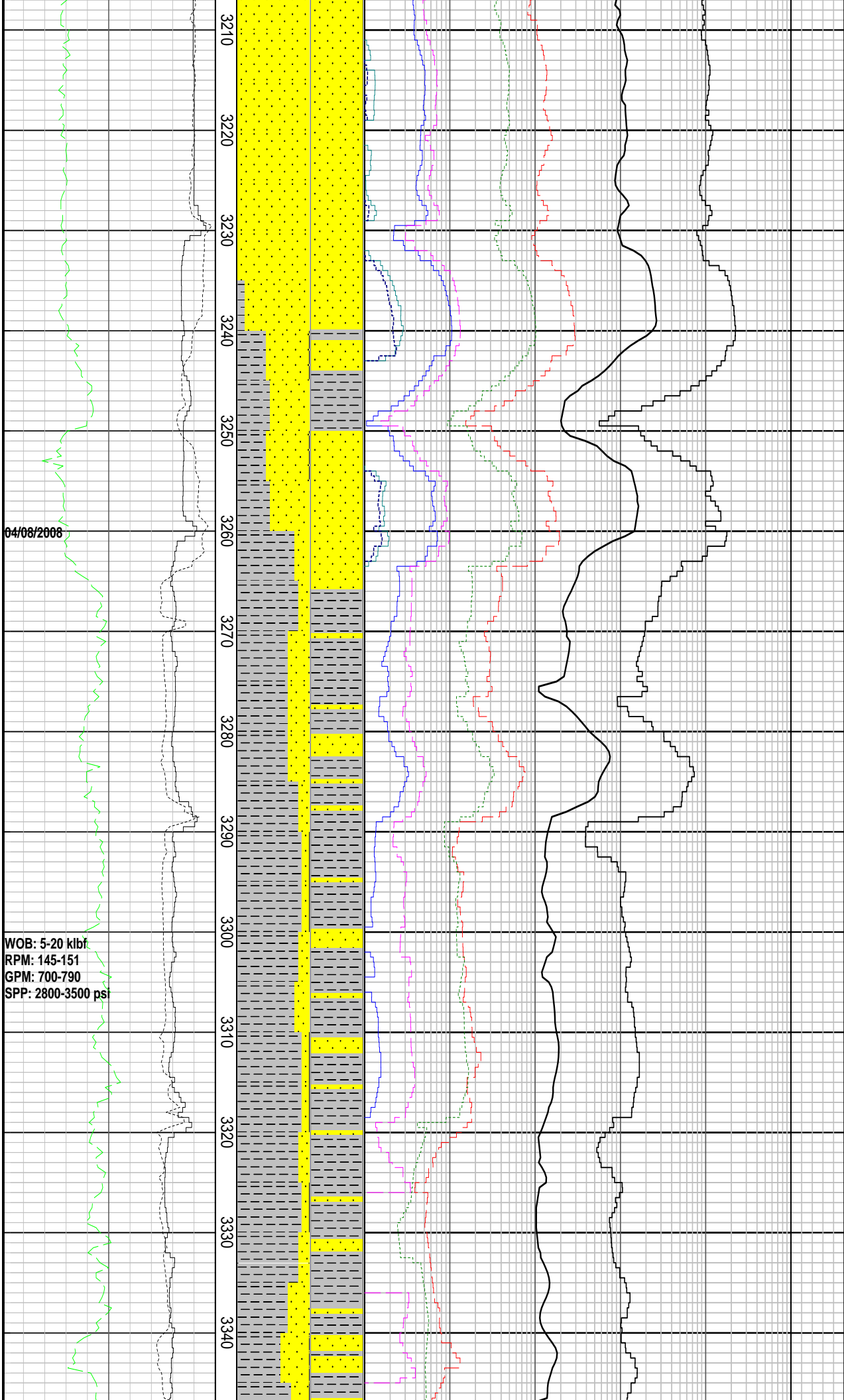
SST: lt gy, trnsi, f-crs gr, occ v crs gr, pred frm agg, sbang-sbrndd, sbsph, pr-mod srt, tr arg mtrx, pr vis & inf por, no shw

MD: 3164.24m Azi: 185.24°  
TVD: 2618.9m Incl: 80.13°

CLYST: m dk gy-dk gy, sft-frm, sbbiky-blky, amor

MD: 3194.93m Azi: 185.98°  
TVD: 2624.3m Incl: 79.46°

SST: lt gy, trnsi-trnsp, f-crs gr, occ v crs gr, sbang-sbrndd, sbsph, pr srt, tr arg mtrx, tr flsp gr i/p, pr vis por, nc



MD: 3224.35m Azi: 184.32°  
TVD: 2629.2m Incl: 81.52°

SST: v lt gy-lt gy, trnsi-trnsp, f-crs gr,  
occ v crs gr, sbang-sbrnnd, sbsph,  
mod-wl srt, tr arg mtrx, sil cmt, tr  
glauc, pr vis por, no shw

CLYST: dk gy-m dk gy, occ lt gy,  
sft-frm, hd i/p, sbblky-blky, amor i/p, n  
calc, tr carb lit

MD: 3254.13m Azi: 184.05°  
TVD: 2632.8m Incl: 84.39°

SST: v lt gy-lt gy, trnsi-trnsp, f-crs gr,  
occ v crs gr, sbang-sbrnnd, sbsph,  
mod-wl srt, tr arg mtrx, sil cmt, tr  
glauc, rr dissep pyr, pr vis por, no  
shw

CLYST: dk gy-m dk gy, occ lt gy,  
sft-frm, hd i/p, sbblky-blky, amor i/p, n  
calc, tr carb lit

MD: 3283.78m Azi: 180.52°  
TVD: 2635.0m Incl: 87.22°

CLYST: dk gy-m dk gy, occ lt gy,  
sft-frm, hd i/p, sbblky-blky, amor i/p, n  
calc, tr carb lit

MD: 3313.51m Azi: 179.55°  
TVD: 2635.6m Incl: 90.41°

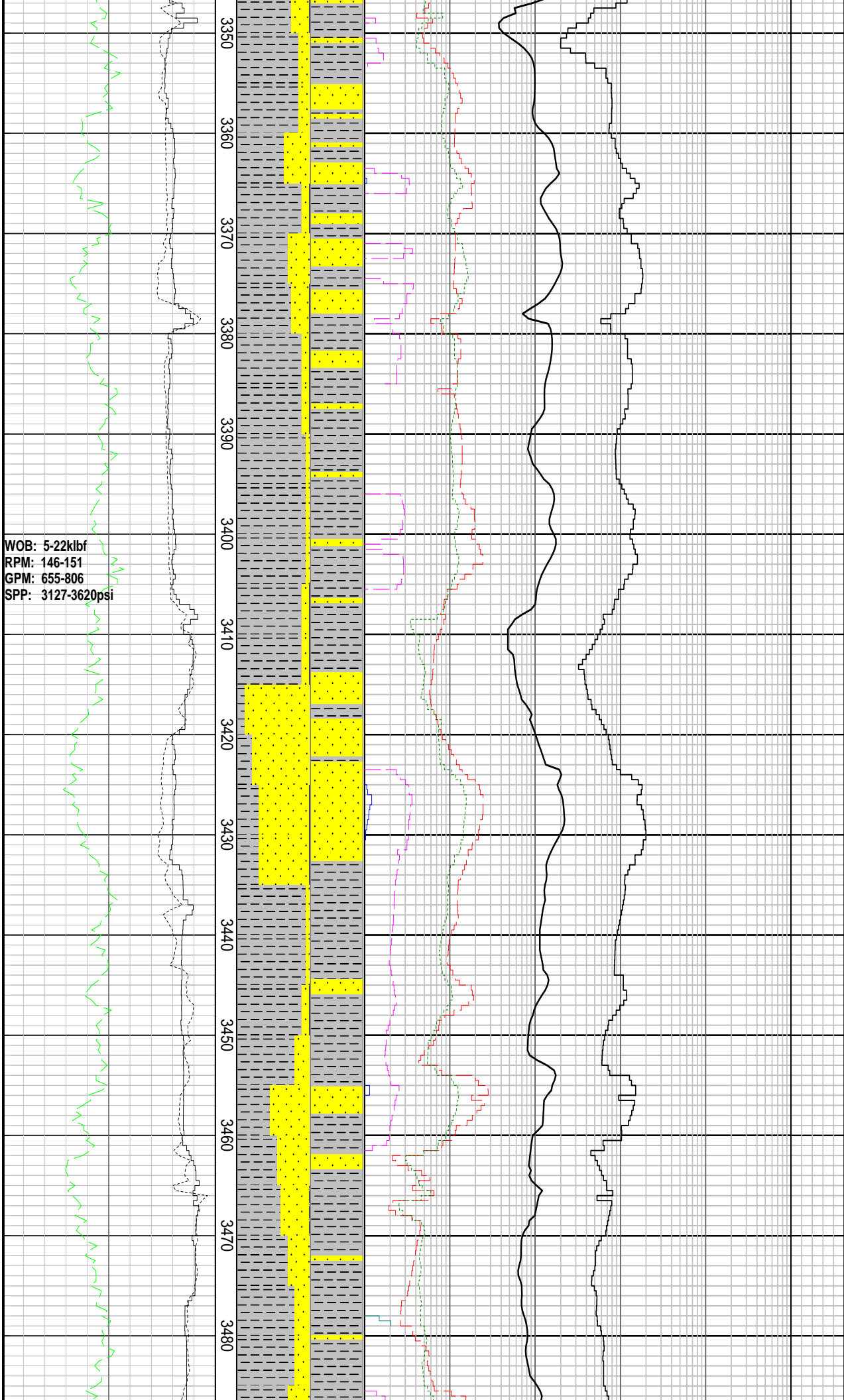
MW: 12.00 ppg FV: 80  
PV: 47 YP: 31  
Gels: 14/25/29  
O/W: 74.4/25.6

SST: v lt gy-lt gy, trnsi-trnsp, f-crs gr,  
occ v crs gr, sbang-sbrnnd, sbsph,  
mod-wl srt, tr arg mtrx, sil cmt, tr  
glauc, pr vis por, no shw

MD: 3343.47m Azi: 182.41°  
TVD: 2634.7m Incl: 93.13°



WOB: 5-22klbf  
RPM: 146-151  
GPM: 655-806  
SPP: 3127-3620psi



CLYST: dk gy-m dk gy, occ lt gy, sft-frm, hd i/p, sbblky-blky, amor i/p, n calc, tr carb lit

MD: 3373.36m	Azi: 181.60°
TVD: 2632.8m	Incl: 94.02°

CLYST: dk gy-m dk gy, sft-frm, blky, n calc

MD: 3402.75m	Azi: 178.76°
TVD: 2630.8m	Incl: 93.92°

SST: v lt gy-lt gy, trnsi-trnsp, f-crs gr, occ v crs gr, sbang-sbrndd, sbsph, pr-mod srt, tr arg mtrx, tr glauc, pr vis por, no shw

MD: 3431.88m	Azi: 178.07°
TVD: 2629.5m	Incl: 91.13°

CLYST: dk gy-m dk gy, sft-frm, blky, n calc

SST: v lt gy-lt gy, trnsi-trnsp, f-crs gr, occ v crs gr, sbang-sbrndd, sbsph, pr-mod srt, tr arg mtrx, tr glauc, pr vis por, no shw

MD: 3461.34m	Azi: 178.76°
TVD: 2628.8m	Incl: 91.68°

CLYST: m lt-m dk gy, sft-frm, blky, tr carb mat, n calc

WOB: 3-21klbf  
RPM: 146-149  
GPM: 723-792  
SPP: 3109-3578psi

RR11: 241mm (9-1/2")  
Make: REED  
Type: RSR616M-B3  
Jets: 6x16  
Depth In: 3577m  
Depth Out: xxxx m  
Drilled xxxm in xx.x hrs  
Grade: xxxxx

WOB: 3-19klbf  
RPM: 133-149  
GPM: 625-765  
SPP: 2424-3390psi

MD: 3492.03m    Azi: 180.60°  
TVD: 2627.9m    Incl: 91.51°

MW: 12.00 ppg    FV: 92  
PV: 44    YP: 27  
Gels: 14/22/27  
O/W:74.4/25.6

SST: v lt gy-lt gy, trnsl-trnsp, f-crs gr,  
occ v crs gr, sbang-sbrnnd, sbsph,  
pr-mod srt, tr arg mtrx, tr glauc, pr vis  
por, no shw

MD: 3521.63m    Azi: 178.88°  
TVD: 2627.2m    Incl: 91.27°

CLYST: m lt-m dk gy, sft-frm, blk, tr  
carb mat, n calc

MD: 3551.39m    Azi: 180.83°  
TVD: 2626.5m    Incl: 91.44°

SST: v lt gy-lt gy, trnsl-trnsp, f-crs gr,  
occ v crs gr, sbang-sbrnnd, sbsph,  
pr-mod srt, tr arg mtrx, tr glauc, pr vis  
por, no shw

MD: 3564.74m    Azi: 180.85°  
TVD: 2626.2m    Incl: 91.37°

Bit Trip @ 3577.0m

MW: 12.01 ppg    FV: 110  
PV: 43    YP: 31  
Gels: 14/23/27  
O/W:75/25

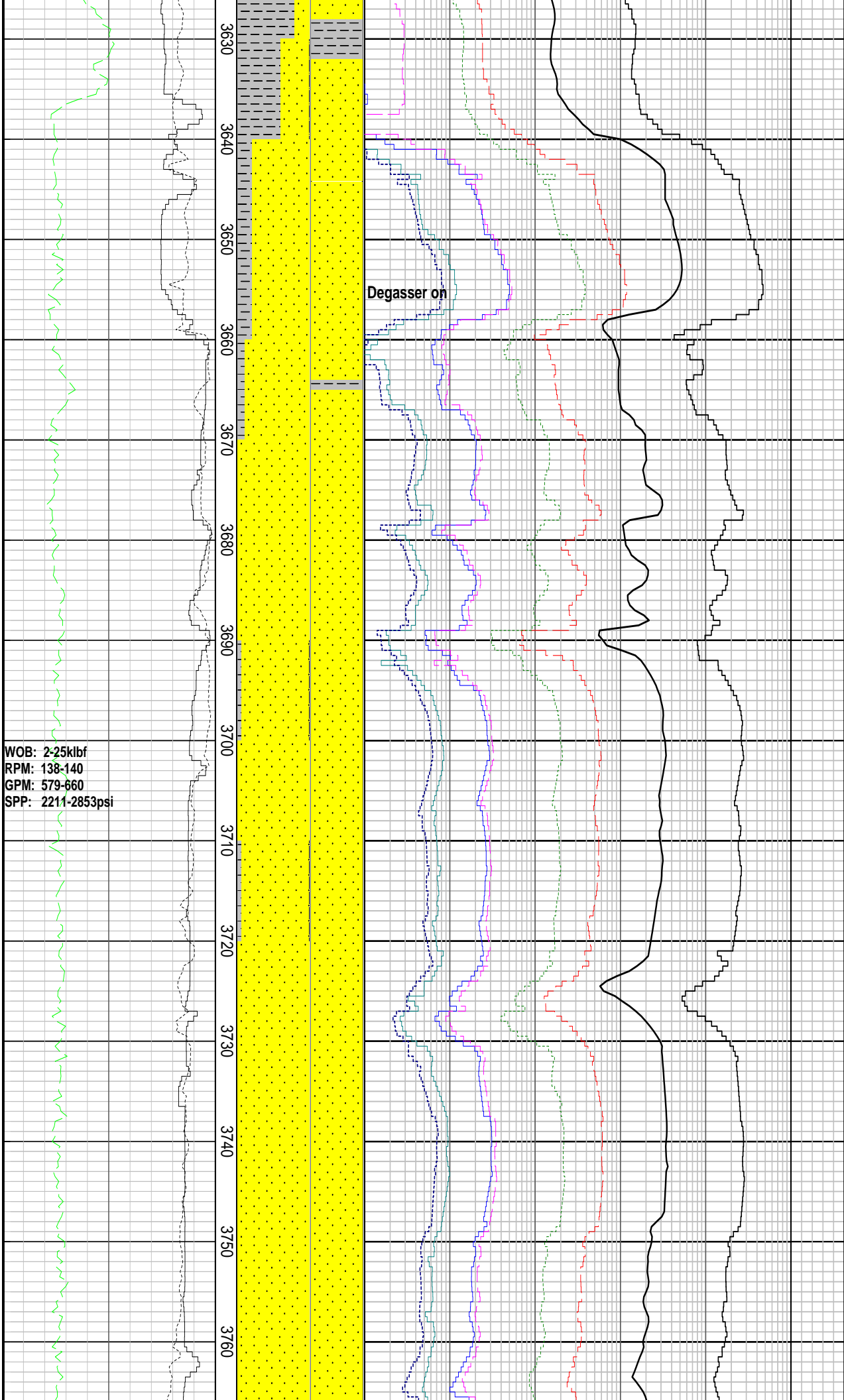
SST: v lt gy-lt gy, occ wh, clr-trnsl,  
occ opq, f-crs gr, occ v crs gr,  
sbang-sbrnnd, sbsph, pr-mod srt, tr  
arg mtrx, tr glauc, tr blk lit, pr vis por,  
no shw

MD: 3594.59m    Azi: 180.97°  
TVD: 2625.5m    Incl: 91.46°

CLYST: m dk gy-dk gy, sft-frm,  
sbbiky-blky, tr carb mat, n calc



WOB: 2-25klbf  
RPM: 138-140  
GPM: 579-660  
SPP: 2211-2853psi



SST: lt olv gy-m lt gy, clr-trnsl, fri, vf-f  
gr, occ m gr, sbang-sbrndd, sbsph, w  
srt, pr-mod calc cmt, tr blk lit, pr vis  
por, no shw

MD: 3653.86m Azi: 184.27°  
TVD: 2623.9m Incl: 91.66°

CLYST: m gy-m dk gy, sft frm,  
sbbiky-blky, fiss i/p, n calc

MD: 3684.08m Azi: 183.77°  
TVD: 2623.4m Incl: 90.26°

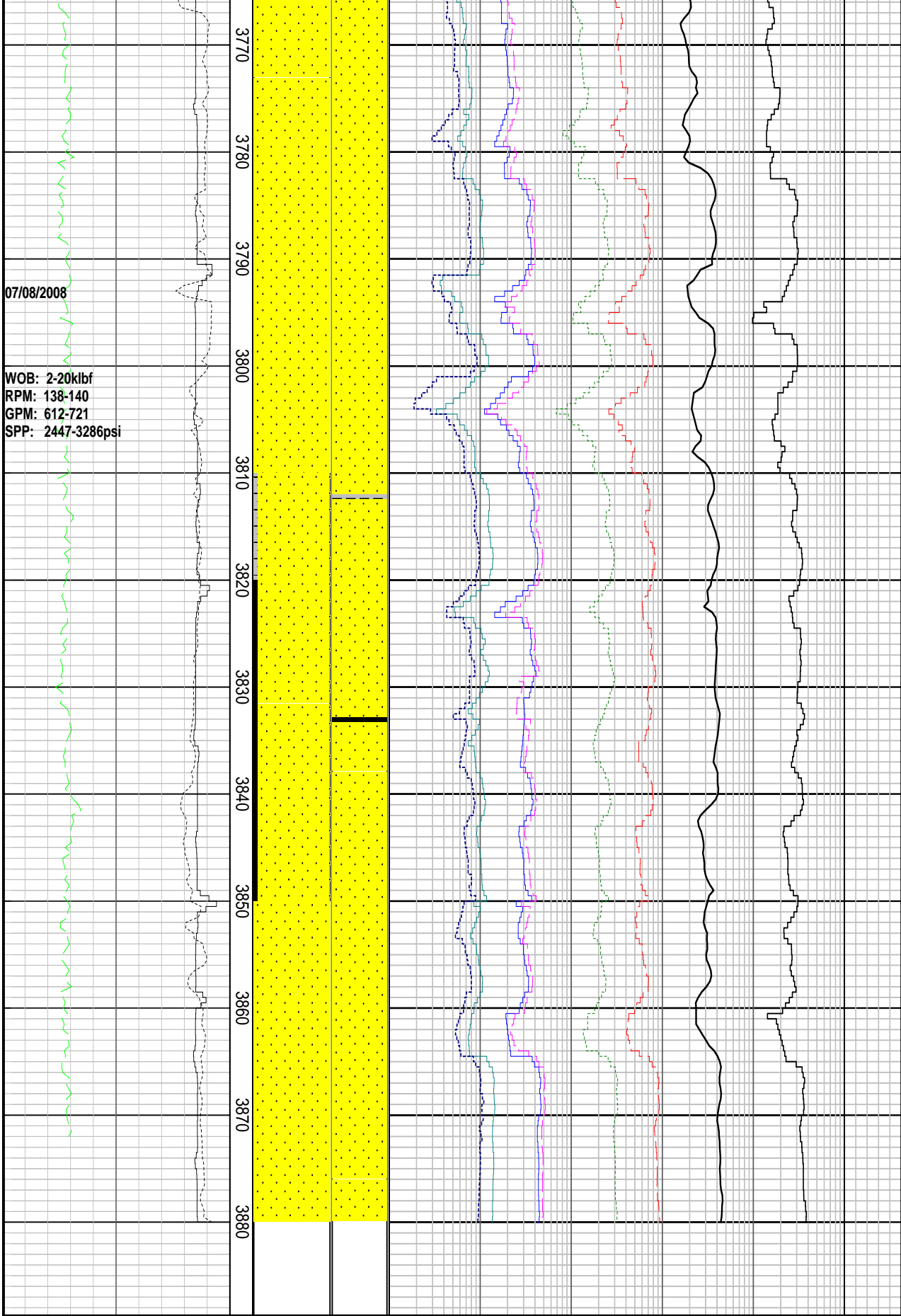
SST: olv gy, occ or gr, clr-trnsl, fri,  
vf-m gr, ang-sbang, sbsph, mod srt,  
wk calc cmt, tr blk lit, tr glau, pr vis  
por, no shw

MD: 3711.90m Azi: 185.04°  
TVD: 2623.4m Incl: 89.74°

SST: olv gy, m lt gy, occ or gr,  
clr-trnsl, fri, vf-m gr, sbang-sbrndd,  
sbsph, mod srt, wk calc cmt, tr blk lit,  
tr glau, pr vis por, no shw

MD: 3740.99m Azi: 184.85°  
TVD: 2623.8m Incl: 88.54°

SST: olv gy, occ or gr, clr-trnsl, fri,  
vf-m gr, ang-sbang, sbsph, mod srt,  
wk calc cmt, tr blk lit, tr glau, pr vis  
por, no shw



MD: 3770.39m Azi: 184.63°  
TVD: 2625.3m Incl: 85.50°

SST: olv gy-lt olv gy, occ or gr,  
clr-trnsl, occ opq, fri, vf-m gr, crs gr  
i/p, sbang-sbrndd, sbsph, pr-mod srt,  
wk calc cmt, tr blk lit, tr glau, pr inf  
por, no shw

MD: 3799.79m Azi: 184.62°  
TVD: 2627.8m Incl: 83.81°

SST: olv gy-lt olv gy, occ or gr,  
clr-trnsl, occ opq, fri, vf-m gr, crs gr  
i/p, sbang-sbrndd, sbsph, pr-mod srt,  
wk calc cmt, tr blk lit, tr glau, pr inf  
por, no shw

MD: 3829.12m Azi: 183.90°  
TVD: 2631.1m Incl: 82.94°

COAL: blk, frm, blk-y-sbblky,  
erthy-sbvlt lus, brit

SST: olv gy-lt olv gy, occ or gr,  
clr-trnsl, occ opq, fri, vf-m gr, crs gr  
i/p, sbang-sbrndd, sbsph, pr-mod srt,  
wk calc cmt, tr blk lit, tr glau, pr inf  
por, no shw

MD: 3859.22m Azi: 183.23°  
TVD: 2634.6m Incl: 84.01°

SST: olv gy-lt olv gy, occ or gr,  
clr-trnsl, occ opq, fri, vf-m gr, crs gr  
i/p, sbang-sbrndd, sbsph, pr-mod srt,  
wk calc cmt, tr blk lit, tr glau, pr inf  
por, no shw

<p>Gamma Ray</p> <p>ROP</p> <p>WEIGHT ON BIT</p>	<p>MD meters 1:500</p>	<p>Cuttings</p>	<p>INTERPRETED LITHOLOGY</p>	<h3>FORMATION EVALUATION LOG</h3> <p>Chromatograph Data</p> <p>Methane ppm</p> <p>Ethane ppm</p> <p>Propane ppr</p>	<p>Analysis</p>	<p>DIRECT FLUOR</p>	<h3>LITHOLOGY DESCRIPTIONS</h3>
--	------------------------	-----------------	------------------------------	---	-----------------	---------------------	---------------------------------

80	64	48	32	16
klbf				
ROP BACKUP				
300	280	260	240	220
m/hr				

10	100	1000	10000	100000
iso-Butane ppm				
10	100	1000	10000	100000
n-Butane ppm				
10	100	1000	10000	100000
iso-Pentane ppm				
10	100	1000	10000	100000
n-Pentane ppm				
10	100	1000	10000	100000
Ditch Gas %				
0.01	0.1	1	10	100